

infotec

Digital Network

*Digital solutions for today's office:
Document server, print, copy, fax,
scan, scan-to-email*

infotec IS 2225/ IS 2230





All the flexibility and functionality you need and all in one system

Copy, print, scan and fax. Logically designed for central use on a network, the infotec IS 2225 and IS 2230 multifunctional black & white digital systems save valuable time and money thanks to state-of-the-art, web-based document management.

Flexible interfaces guarantee seamless integration into any IT environment allowing more efficient workflows, such as the direct scanning and sending of documents as email attachments, or paperless and serverless fax communication.

infotec IS 2225, IS 2230 – user friendly solutions for today's office.



Fast, economical digital printing and copying

- IS 2225: up to 25 pages per minute
IS 2230: up to 30 pages per minute
- Up to 600 dpi resolution, 256 grey scales
- Powerful sorting and finishing options
- Flexible paper capacity up to a max. of 3,100 sheets



Network printing at copying prices

- Printing up to A3 format – including duplex
- Driver interface optimised for common office applications (RPCS)
- Confidential printing
- Combine print jobs from different applications (job binding with RPCS)
- Flexible interfaces:
Ethernet 100 Base-TX/10 Base-T, USB 2.0
Options: Wireless LAN IEEE802.11b, IEEE 1284 Parallel interface, FireWire IEEE 1394 or Bluetooth

RPCS allows complete print jobs, including all finishing options, to be started quickly and conveniently straight from the desktop at the click of a mouse using pre-set or self-defined symbols



Network-based fax communication

- Multi-port thanks to additional G3 lines
- Paperless/serverless faxing, internet faxing
- LAN fax with editor for cover page editing



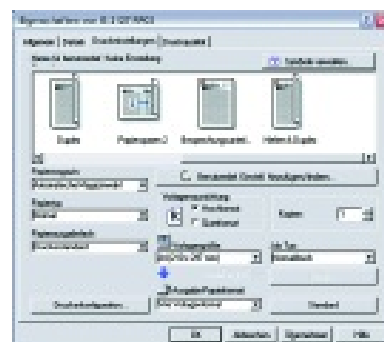
Scanning in black & white with up to 600 dpi resolution

- Scanning in TIFF, TIFF-F, Multi-page, PDF, JPEG
- Scan-to-folder without installing additional software
- Scan-to-email with LDAP support
- TWAIN driver



Central document management across the entire network

- State-of-the-art web-based document management with WebImage Monitor: archiving, distribution and processing of files and documents on an optional hard disk without installing additional software
- Merging of file formats from different applications to form a single print job



Designed without compromise

The infotec IS 2225 and IS 2230 are the perfect systems for efficient information workflow in the office.

Far surpassing the functionality of regular multi-functionals, these systems offer a high degree of flexibility, ease of use and absolute reliability.

Thanks to the innovative GW (Ground Works) controller architecture, the standard system – a 600 dpi digital copier – can be extended with an optional hard disk and intelligent software upgrades to allow multifunctional services such as document server, printing, scanning, scan-to-email, scan-to-folder, merge files, filing of documents or files, electronic network distribution, and faxing as well as paperless and serverless PC or LAN faxing.

The result, a central information interface supporting and streamlining document workflow across workgroups, departments or entire networks. And in addition to tried and tested features such as copying, printing and faxing, this added functionality creates new opportunities for efficient and flexible working in any office environment.

A new way of scanning

With the optional printer/scanner module, the IS 2225 and IS 2230 are transformed into genuine network scanners, with scanning speeds of up to 52 pages and a resolution of up to 600 dpi.

Scan-to-email: All scanned data can be sent as email attachments to any email address via the Internet or intranet. Company address book email addresses can be accessed via LDAP support.

Scan-to-folder: Using the document glass or the ARDF, convert paper-bound documents into digital data as a TIFF, multi-page TIFF, JPEG or PDF file and transfer to directories using SMB or FTP protocol. All scanned data can also be stored straight onto the optional hard disk and processed at a later date.

Scan-to-URL: Scanned images can be stored for viewing or downloading via the Web, thus improving network productivity (by reducing network traffic) and sharing of information.

Scan-to-NCP: Novell NetWare users are able to send up to 2GB of documents, thereby improving information sharing.

Features and benefits

Digital technology	High quality input and output (copy and printing 600 dpi), wide range of editing functions, stamp functions, electronic sorting, text, text/photo and photo mode, numerous special functions
Scan once - print many	Preserves the source document, uniform output quality, reduced sound level
Touch-Screen LCD Display	Simple and convenient control, clear operator guide
Innovative GW architecture	Extend the central control unit to include fax, printer and scanner functions
Powerful software components	Convenient document management directly from the desktop
Browser-based WebImageMonitor, e.g. via Internet Explorer or Netscape	Without installing additional software: <ul style="list-style-type: none">– Read, print, delete and download from the document server– Read, download, print and delete incoming fax messages– Address book control for scan-to-email– Fax numbers can be programmed– Network settings, job log, machine status– Security settings: password, access control, IPP authorisation
Document server 20 GB hard disk (option)	Intelligent management (scanning, storage, archiving and distribution) of files and documents across the entire network Access from all connected PCs Combining of copy and print jobs Merging of files and documents from different applications Extended printing functions: confidential printing, test printing
Automatic document feeder	Scan up to 50 source documents
Duplex unit	Automatic two-sided copying and printing with up to 25/30 pages per minute
Paper supply up to 3100 sheets	Non-stop printing and copying – even for large numbers of copies
Paper feed from up to five different trays (inc. bypass)	Flexible choice of materials, up to five types of paper can be processed simultaneously in a single copying job
Online finishing	A 1000 or 500-sheet finisher allows sorting and binding of entire document sets directly from the desktop at the click of a mouse
Printer module (option)	Seamless integration into any IT environment and cross-platform printing
Flexible page description languages	<ul style="list-style-type: none">– PCL5e, PCL6 and Adobe PS 3 (optional) guarantee printing from common Windows, Mac and Linux applications– The easy to use RPCS exclusively supports Windows applications, increasing the data flow
Printer/scanner module	Up to 600 dpi network scanner, scan-to-folder without additional software and scan-to-email with LDAP support
Convenience fax module	Confidential send and receive, double-sided transmission (with ARDF and memory expansion) as well as integrated telephone directory functions (up to 2,000 fax numbers)

Technical specifications IS 2225 / IS 2230

Technology

- Flatbed scanner with movable CCD image-sensing region
- Electro-photographic dual laser

Functions

- Digital copier
- Laser printer
- Scanner
- Document server
- Super G3 fax

Resolution

- Copying: up to 600 dpi, 256 grey scales
- Printing: up to 600 dpi
- Scanning: 100 to 600 dpi, 256 graduations
- Faxing: up to 400 x 400 dpi

Output speed

- IS 2225: up to 25 A4 pages per minute simplex/duplex
- IS 2230: up to 30 A4 pages per minute simplex/duplex

Paper: capacity, formats and weights

- Standard**
 - Tray 1 1x 500 sheets, A5 - A3, 60 - 105 gsm
 - Tray 2 1x 500 sheets, A6 - A3, 52 - 157 gsm
- Options**
 - Trays: 2x 500 sheets, A5 - A3, 60 - 105 gsm
 - Bypass: 100 sheets, A6 - A3, 52 - 157 gsm
 - Duplex: A5 - A3, 64 - 105 gsm
 - Large-capacity tray: 2,000 sheets, A4, 60 - 105 gsm

Output capacity (A4, 80 gsm, unbound)

- Standard: 500 sheets (250 sheets with bridge unit)
- Internal stacker for fax output (option): 125 sheets
- Finisher SR790 (option): 1000 sheets
- Finisher SR820 (option): 500 sheets

Document server

- Maximum storage capacity: 20 GB
- Central storage and control: archive, forward, repeat print, change file name, delete file, process files, merge documents, scan to document server
- Operation: Direct operation via display screen; via any web browser*; directly from desktop with WebImageMonitor (no need to install additional software)

Dimensions, weight, power supply

- Dimensions (W x D x H): 550 mm x 604 mm x 980 mm
- Weight: < 62 Kg
- Power supply: 220-240V, 50/60 Hz
- Electronic and mechanical counters

Software tools

- DeskTopBinder V2 Lite
- SmartDevice Monitor for Client and Admin
- LAN-Fax M3, 1394 utility
- Printer utilities for Mac and TWAIN drivers

Copier specifications

- First copy: IS 2225: approx. 4.9 sec.
IS 2230: approx. 4.5 sec.
- Warm-up time: all models: approx. 15 sec.
- 128 MB working memory as standard
- Copy pre-selection up to 99 copies (simplex, duplex)
- User guidance via monochrome LCD display
- Copier mode: Text, photo, text/photo (print, copy, photography), card mode, light colours, 2nd generation
- ADS (Auto Density)
- Manual or automatic density selection
- Zoom 25% to max. 400% in 1% steps
- Enlarge/Reduce in 12 fixed stages
- Cover page function, separator sheet for OHP transparencies
- Archiving (on optional hard disk)
- Job start while scanning source documents

Special functions

- Text, photo, text/photo mode, generation mode, pastel mode for source documents with light colours
- Delete edge/middle, image rotation, positive/negative centring, image brightness, contrast
- Combining source documents: Simplex: 2 in 1, 4 in 1, 8 in 1
Duplex (option): 4 in 1, 8 in 1, 16 in 1

Convenience functions

- 100 user codes (max. 500 with optional memory expansion)
- Electronic sorting, rotation sorting
- 1 scan - multiple copies, test printing
- Auto start, job pre-selection
- Automatic paper selection and paper alignment
- Numerous stamp functions
- Pause/interruption, energy-saving mode

Options (Quantity figures for 80gsm paper weight)

- ARDF: 50 sheets, feeding speed corresponds 1:1 to the machine speed
Simplex source documents: A5 - A3, 40-128gsm
Duplex source documents: A5 - A3, 52-105 gsm
- Large-capacity tray (RT45) 2,000 sheets
- 1,000-sheet finisher (SR790), up to 50 sheet binding, 2 staples/1 position
- 500-sheet finisher (SR820) 500 sheets up to 30 sheet binding (A4)
- Duplex unit

Also available (not illustrated)

- Glass plate cover
- Bypass
- Paper trays 2x 500 sheets
- Bridge unit for finisher 1,000 and 500 sheets
- Internal stacker for fax output 125 sheets
- Printer-scanner module
- 20 GB hard disk expansion
- Fax unit, additional G3 module
- 32 MB SAF memory
- Adobe PostScript 3
- DataOverwrite Security option
- Mask Type/Data Security
- File format converter
- SDK

Printer/Scanner module (P/S module option)

- CPU RM 7035C-466MHz
- 20 GB hard disk (standard for P/S module)
- Network interface: Standard:
 - 100 BASE-TX/10 BASE-T (Ethernet RJ-45)
 - USB 2.0
- Options:
 - Parallel bi-directional IEEE 1284 (ECP)
 - FireWire IEEE 1394 (2 ports) or Wireless LAN IEEE802.11b or Bluetooth
- TCP/IP, IPX/SPX, SMB (NetBIOS via TCP/IP) AppleTalk (Auto Switching)
- Special features: MIB support, WebImage Monitor, confidential printing, job binding (with RPCS)
- Printer drivers**
 - Win9x/Me/2000/XP/NT4.0, Win Server 2003
 - Unix, Novell Netware
 - Mac (only P3 option) OS 8.6 - 9.2x, OS X from 10.1 on
- Scanning**
 - Scanning via the document glass
 - Scanning via the ARDF document feeder
 - with TWAIN: 52 pages/min. at 200 dpi, A4
 - Scan-to-email (2000 email addresses can be stored, LDAP compatible), scan-to-folder (SMB/FTP), internet faxing
 - Scan mode: text, text/photo, photo, grey scales
 - Resolution: 100 to 600 dpi, 256 grey scales
 - Single-page: TIFF, JPEG, Multi-page TIFF, PDF

Fax specifications (option)

- Compatibility: ITU-T (CCITT) G3, additional G3 line
- Resolution: 8 x 3.85 l/mm, 200 x 100 dpi (std)
8 x 15.4, 16 x 15.4 l/mm, up to 400 x 400 dpi (optional expansion memory required)
- Transmission time: 2 sec. (200x100dpi),
2 sec. with JBIG
approx. 0.56 sec. (A4)
- Scan speed: 33,600 bps
- Modem speed: MH/MR/MMR, JBIG
- Compression method: 4MB (320 pages)
Maximum: 28 MB* (2,240 pages)
- Memory back-up: 1 hour
- 100 user programmes (max. 200 programmes)
- Speed dials, name dials 500 (std.), 2000 (Max with HDD)
- 100 group dials
- Numerous convenience functions such as forwarding, confidential send and receive, double-sided send, fax stamp (with optional hard disk), PC faxing, internet faxing, fax-to-email, email-to-fax, paper/serverless faxing without PC fax software

*32 MB SAF memory required



infotec

infotec is a registered trademark of Danka. Danka @ the Desktop and the Danka @ the Desktop Logo are trademarks of Danka Business Systems plc. Errors and amendments excepted. 09/2005